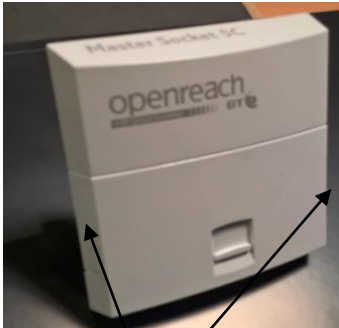


Linebox NTE5C User instructions



Access to home wiring connection point and the network test socket

Remove the front cover by pressing the clips on either side of the front cover and gently pull the plate forward.



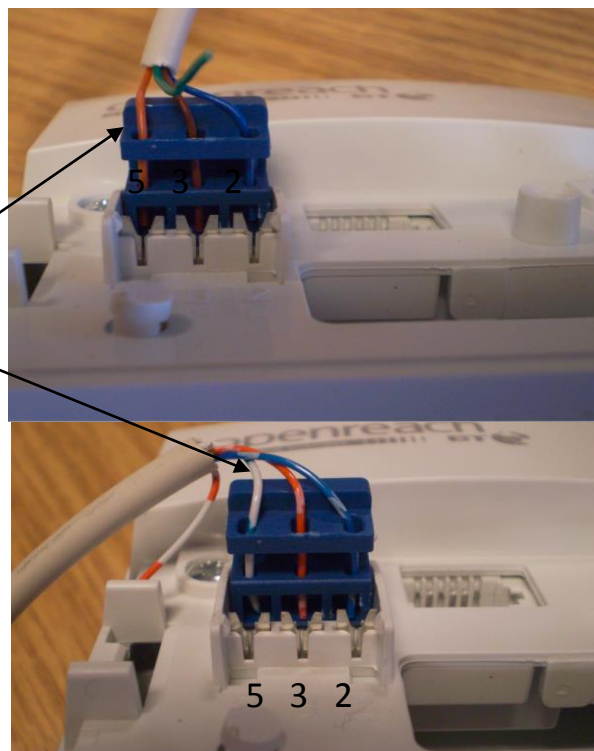
In home wiring connection

1. Lift up the blue coloured connection cover.
2. You will see 3 holes used to separate and connect the coloured wires for the home wiring extension cable.

In home wiring connection – You do not need to remove the coloured insulation from the wires

3. Thread the BLUE (or BLUE with WHITE rings) in the right hand hole above connector number 2. Make sure the wire passes through the front and rear holes.
4. Thread the BROWN (or ORANGE with WHITE rings) in the centre hole above connector number 3. Make sure the wire passes through the front and rear holes.
5. Thread the ORANGE (or WHITE with BLUE rings) in the left hand hole above connector number 5. Make sure the wire passes through the front and rear holes.

Older version of wiring colours are shown in brackets above



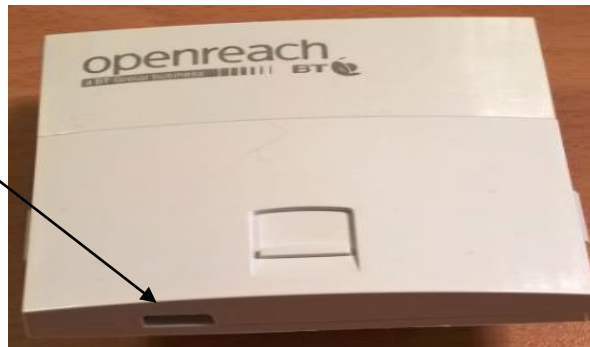
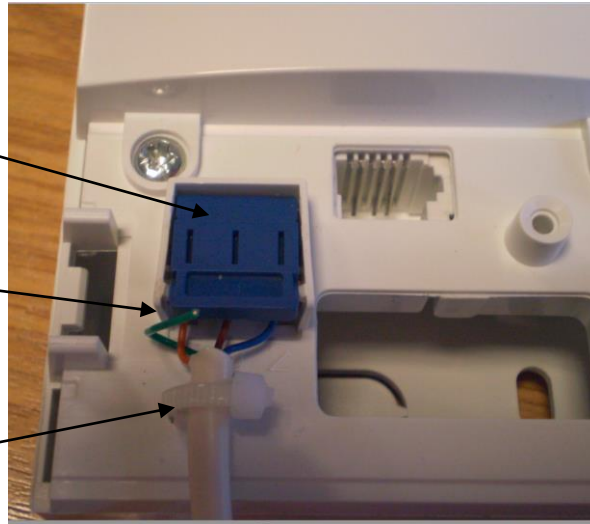
In home wiring connection

6. Push down the blue coloured connection cover and the home wiring will now be connected to the back plate.

7. If there is a spare GREEN (WHITE with ORANGE rings) coloured wire it can be trimmed back as it is not required.

8. Secure the cable to the “post” below hole 3 using a cable tie provided – loop the tie round the cable and post. Ensure the buckle of the tie is on top and do it up. Trim off any excess tie. Line up the cable with the position of the cable access point on front cover.

9. Push the front cover in place to make the final connection to the network

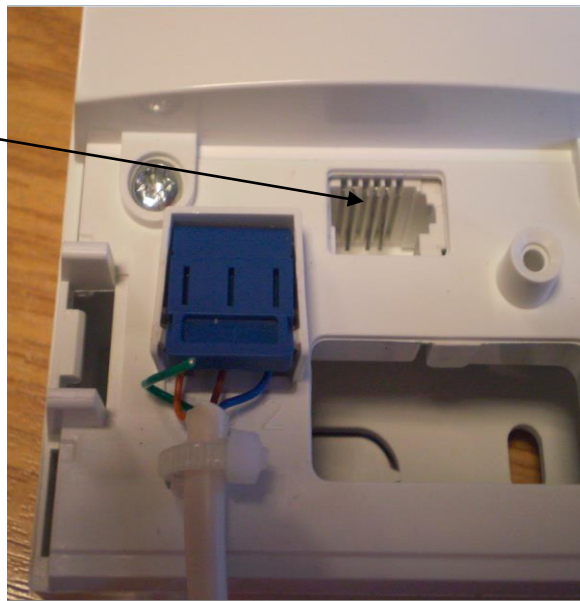


Test Socket used for Fault finding

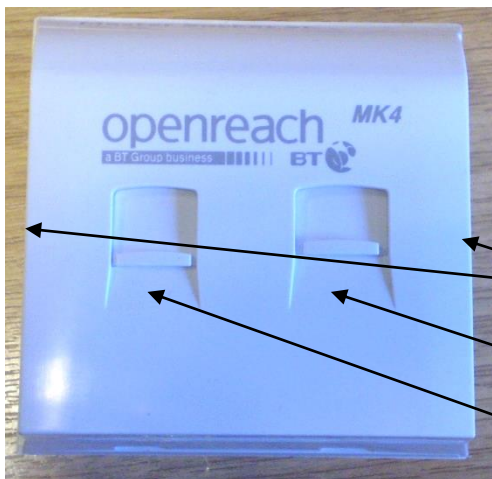
1. With the front cover removed the Test socket can be seen at the “centre top” of the back plate.

2. The Communications Provider CP may ask their Customer to plug into the test socket to carry out fault diagnostic and testing.

3. With the front plate removed the home wiring will be automatically disconnected from the network side and not impact on any fault diagnostics and testing.



Mk 4 VDSL Filter user instructions



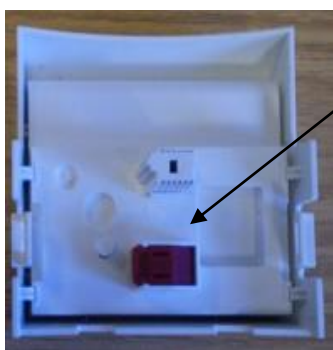
Filter - Data and Phone socket

1. The Mk4 VDSL filter front cover fits on to the NTE5C back plate and provides a built in micro filter with separate telephone and data sockets.
2. It is removed by pressing the clips on either side of the front cover and gently pulling the plate forward.
3. Telephone socket.
4. Data socket.



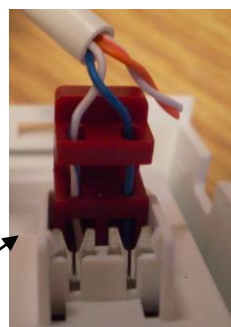
In home wiring and test socket

1. With the Mk4 VDSL filter front cover removed the test socket can be seen at the "centre top" of the back plate and instructions on how it is used are shown above.
2. The back plate is the same as the NTE5C. Instructions on how to connect home telephone wiring to the blue connection point are shown above.



In home data wiring

1. The red connection point found on the reverse of the Mk4 VDSL filter front cover is used to connect home data extension wiring.
2. Lift up the red coloured connection cover and thread the 2 data cable wires in the same way as shown above for NTE5C and close the red cover to make the connection.



BT, Openreach, and the BT logo and the Openreach identity are trademarks of British Telecommunications plc.

British Telecommunications plc

Registered Office:

81 Newgate Street, London EC1A 7AJ

Registered in England and Wales no. 1800000